

2014 APC/PennDOT Fall Seminar

**Presented By
Michael Keiser, P.E.**



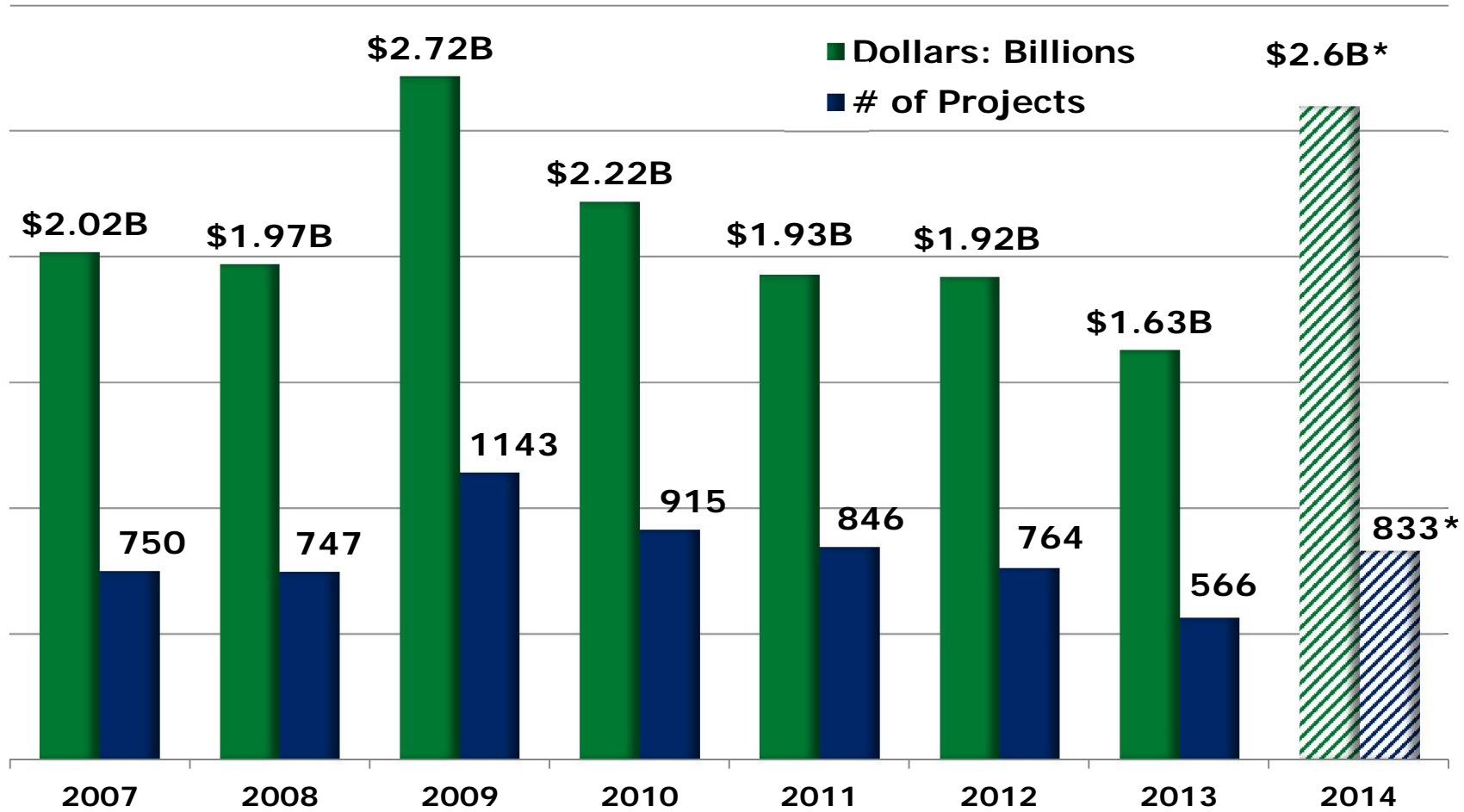
Agenda

- 2014 Highlights
- Major Initiatives
- 2015 Projected Program



2014 Highlights

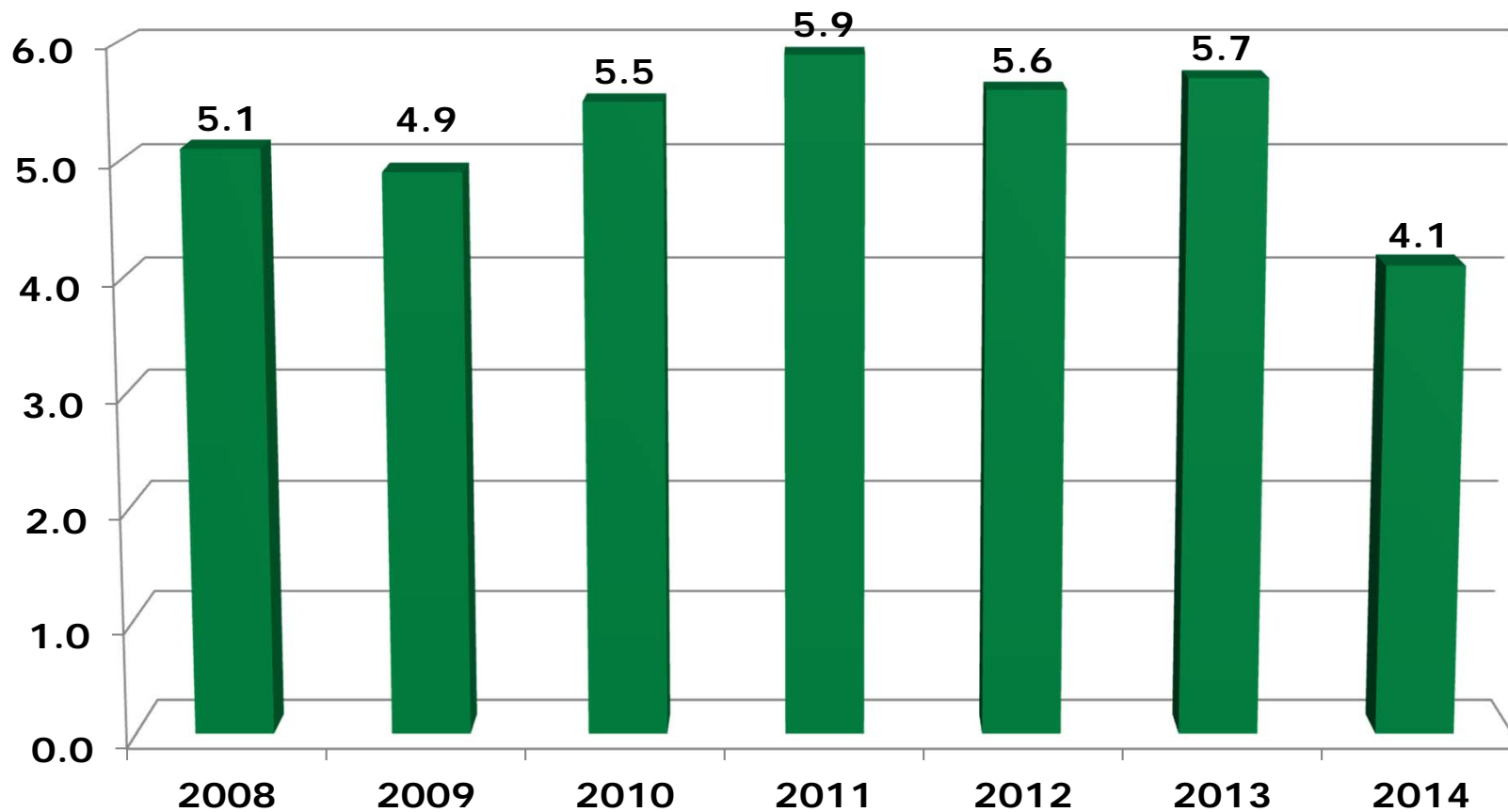
Project Letting Trends



2014 Projections *

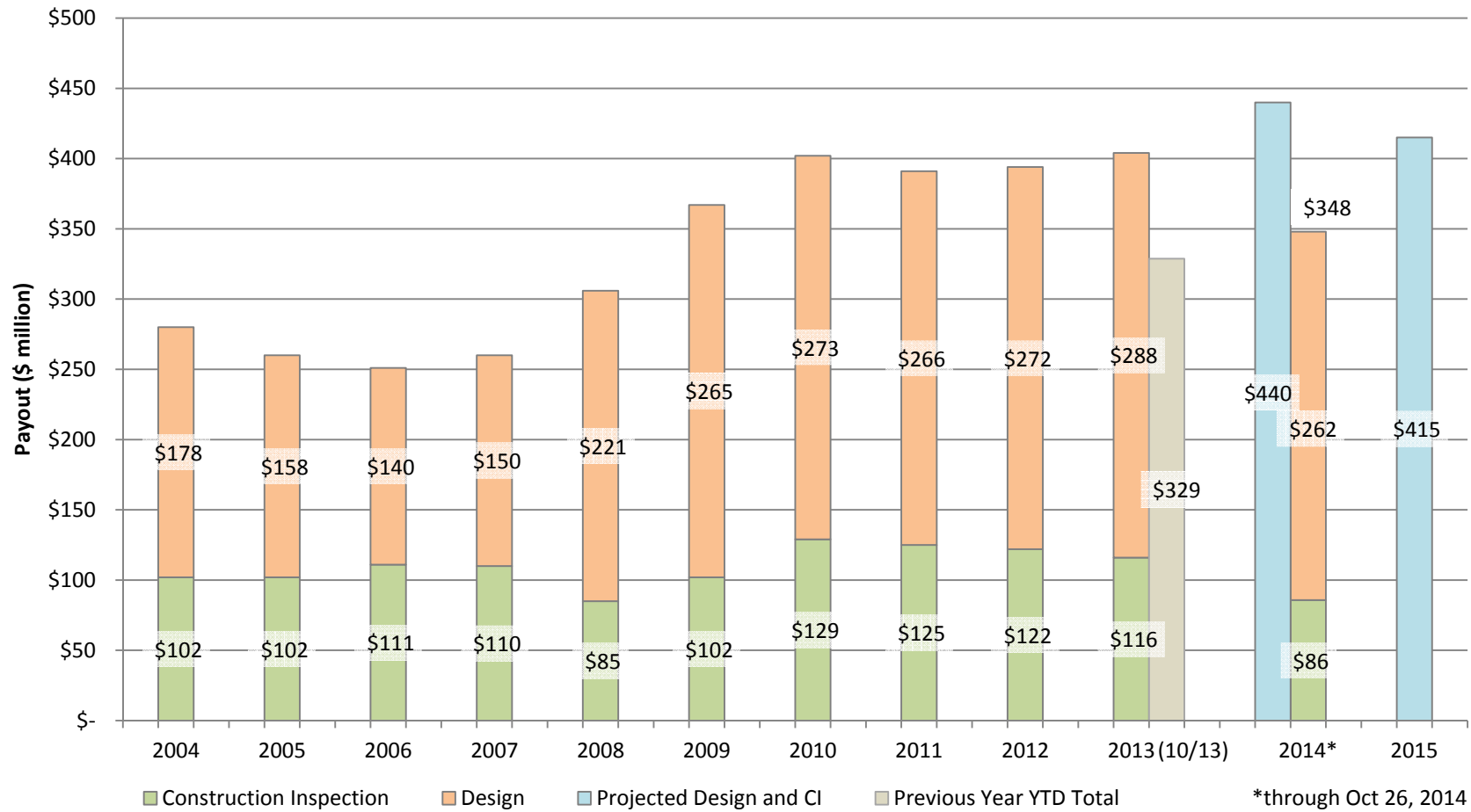


Average Number of Bidders



* thru November 6, 2014

Consultant Payouts



Program Distribution

Cost Based Percentage

	2009	2010	2011	2012	2013	2014
Highway	58%	50%	56%	63%	63%	70%
Bridge	27%	40%	31%	29%	25%	21%*
Other	15%	10%	13%	8%	12%	9%

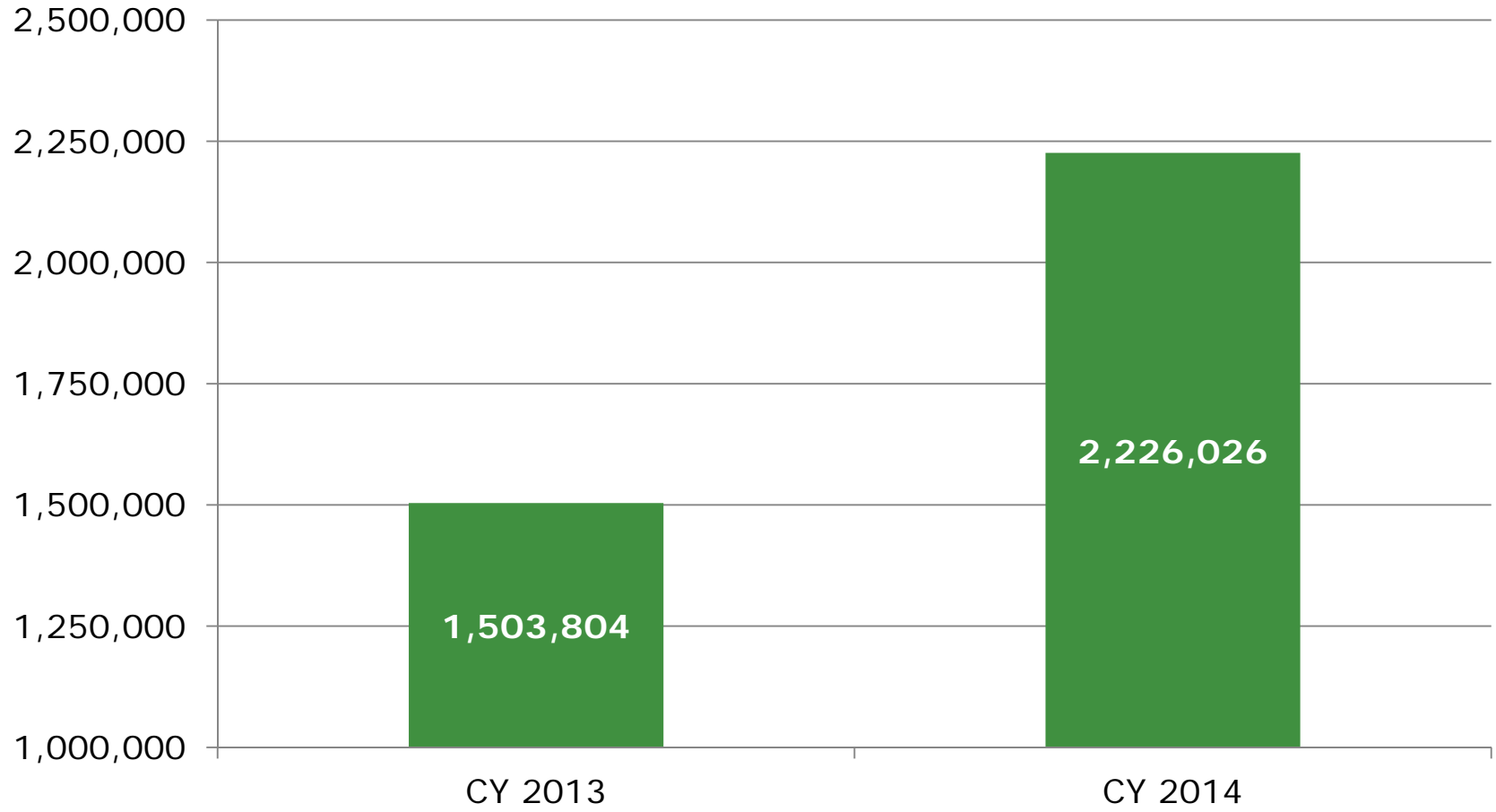
* Without the additional paving contracts, Bridge is 25%

Construction Material Quantities

Material	2012	2013	2014 To Date	2015 Projected
Asphalt (Tons)	5,326,004	4,365,488	5,767,346	7,405,154
Structural Concrete (CY)	375,034	346,762	316,014	371,472
Concrete Paving (SY)	484,631	584,639	670,206	1,068,414
Aggregate (Tons)	7,788,519	7,606,487	9,160,662	11,522,391

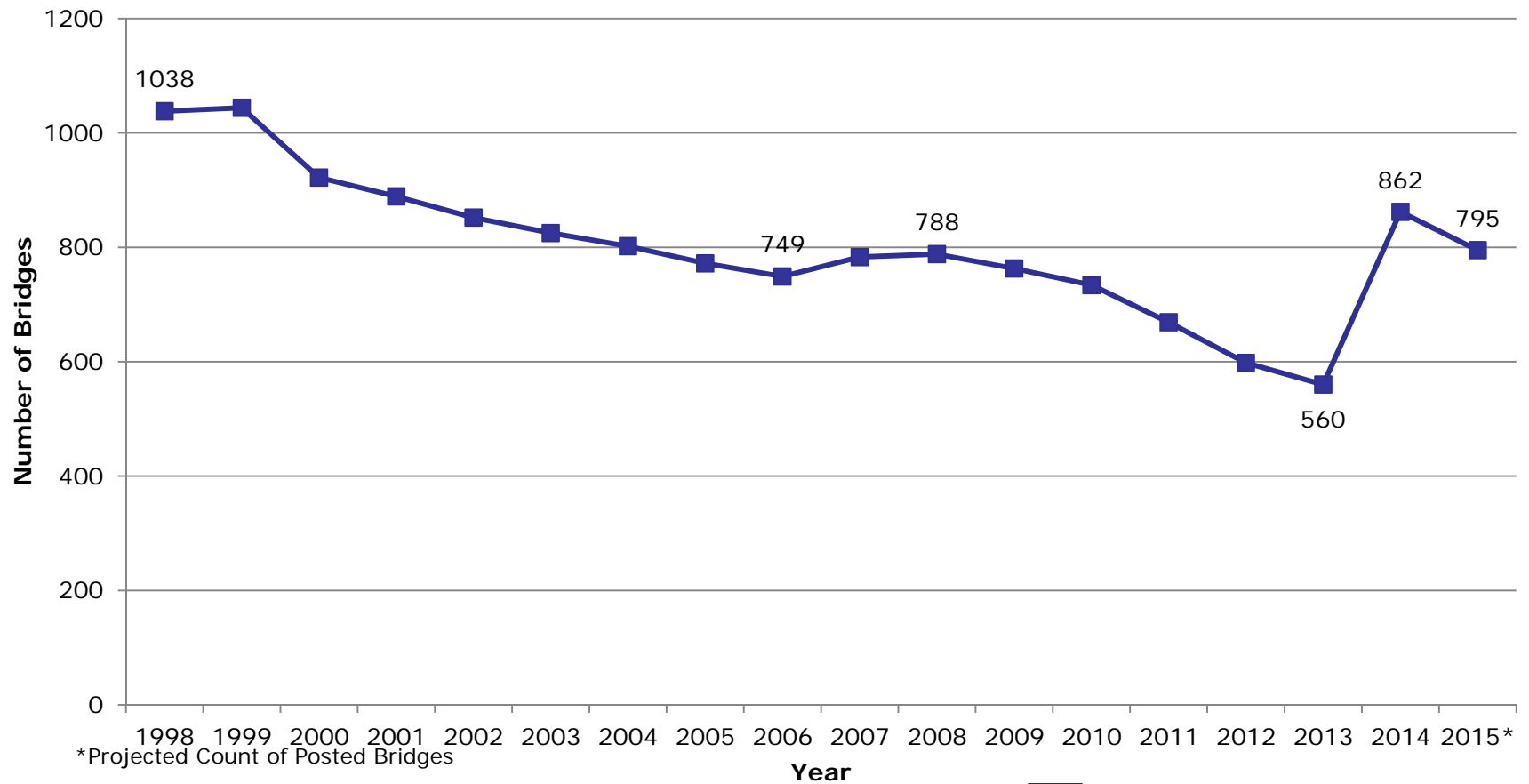
Sustainability- Warm Mix

Tonnage of WMA

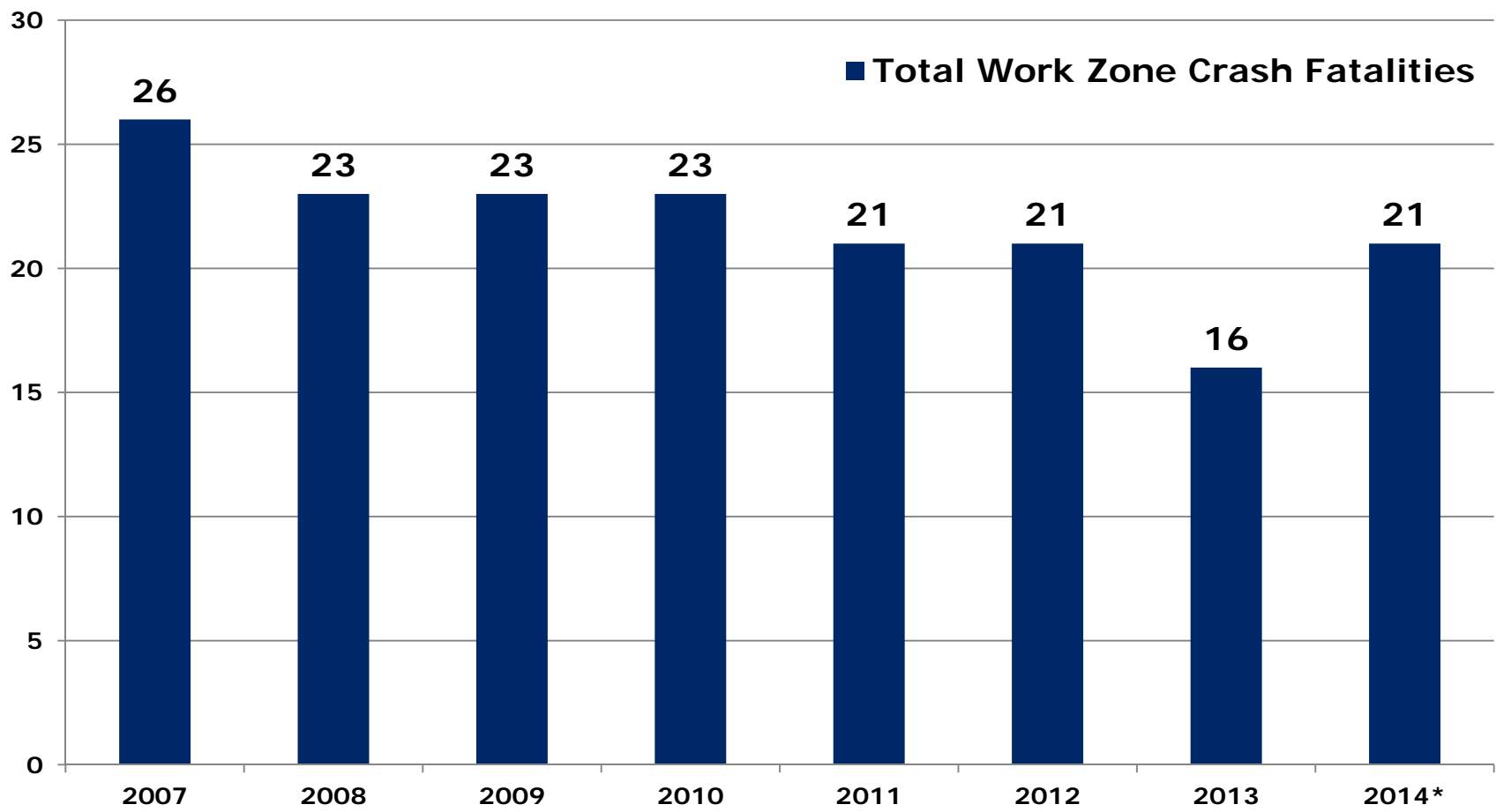


Posted Bridges

Trend of Posted State Bridges



PA Traffic Related Work Zone Fatalities



*As of 9/15/2014



Major Initiatives

▶ Act 89 Implementation

- Posted & Bonded Roads
- Special Hauling
- Municipal Signal Program
- 70 MPH Speed Limit
- Local Bridge Bundling
- Steel Plant Certification
- Cost Sharing Legislation for Public Utility Facilities

▶ Maintenance

- County Modernization:
 - matching county production with industry production

Design

- PennDOT's NextGen:
 - ROW Regionalization
 - Bridge Bundling
 - Redundant reviews

Construction

- Improve Quality
- Reduce Claims
- Reduce Construction Time

IT Projects

- PennDOT Project Collaboration Center
- CDS Version 3
- Mobile Construction Apps
- eCAMMS

> Routed Rentals

We Need Your Help!

No quotes received for 34 routes

▶ Extending the Paving Season

- Memo (July 22, 2014) to DE's from Dep. Sec.
 - Requests considered on an individual project basis
 - Must submit Resource Loaded Schedules
 - WMA is required
 - No restriction on length of extensions
 - Prior approval by DE is required



2015 Program

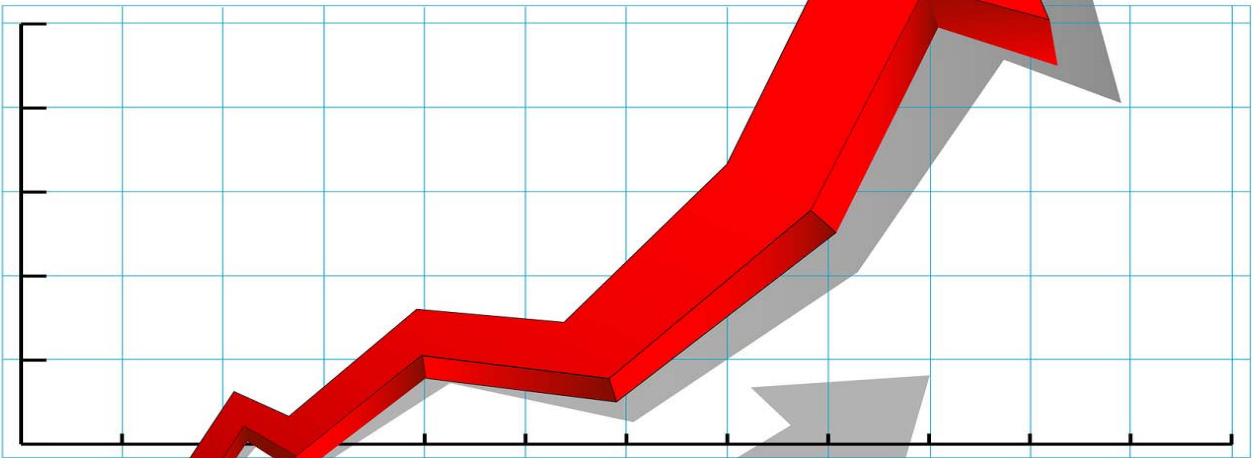
Construction Program

For 2015 we anticipate up to 20 projects will be greater than \$20 Million

2015 Construction Program

\$2.4B + P3 (2015)

\$



\$1.0B + \$1 (2009)



Thank You!

Have a Wonderful Holiday!